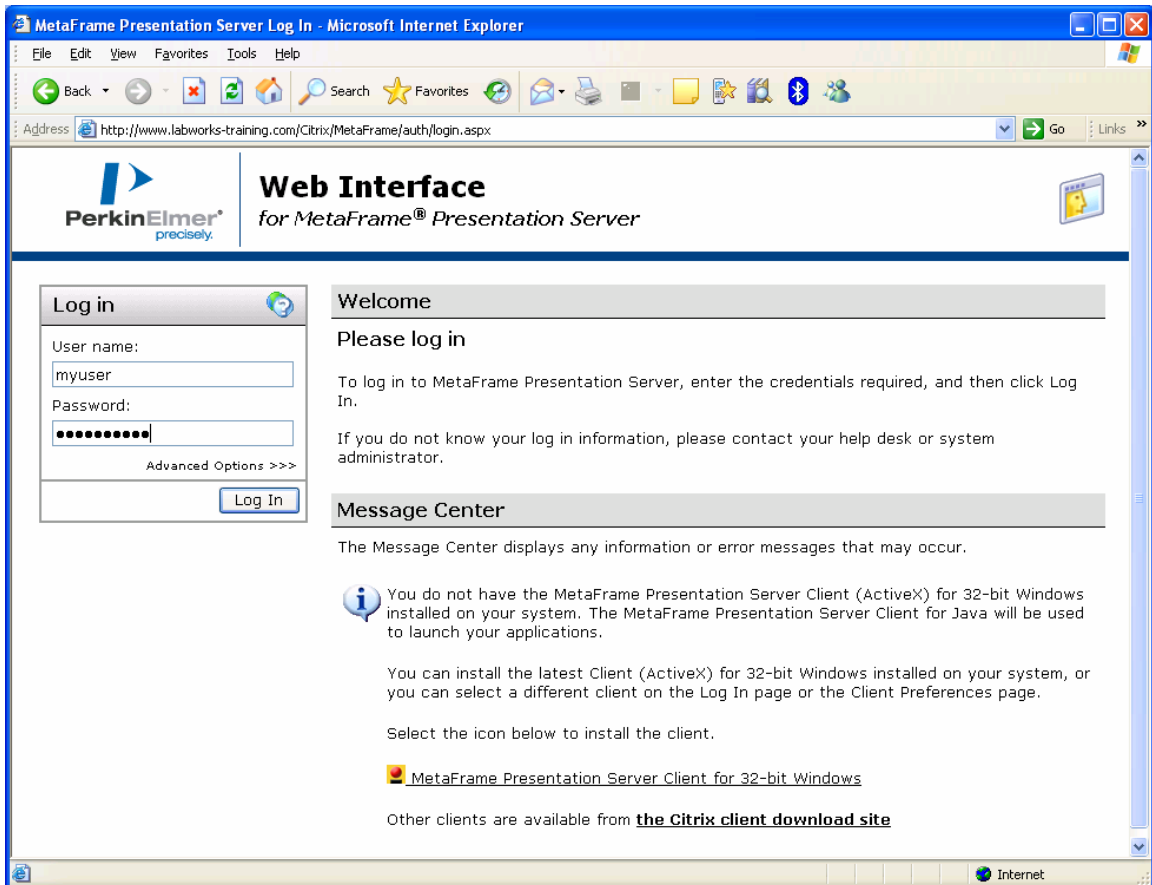


Connecting to the LABWORKS Citrix Server.

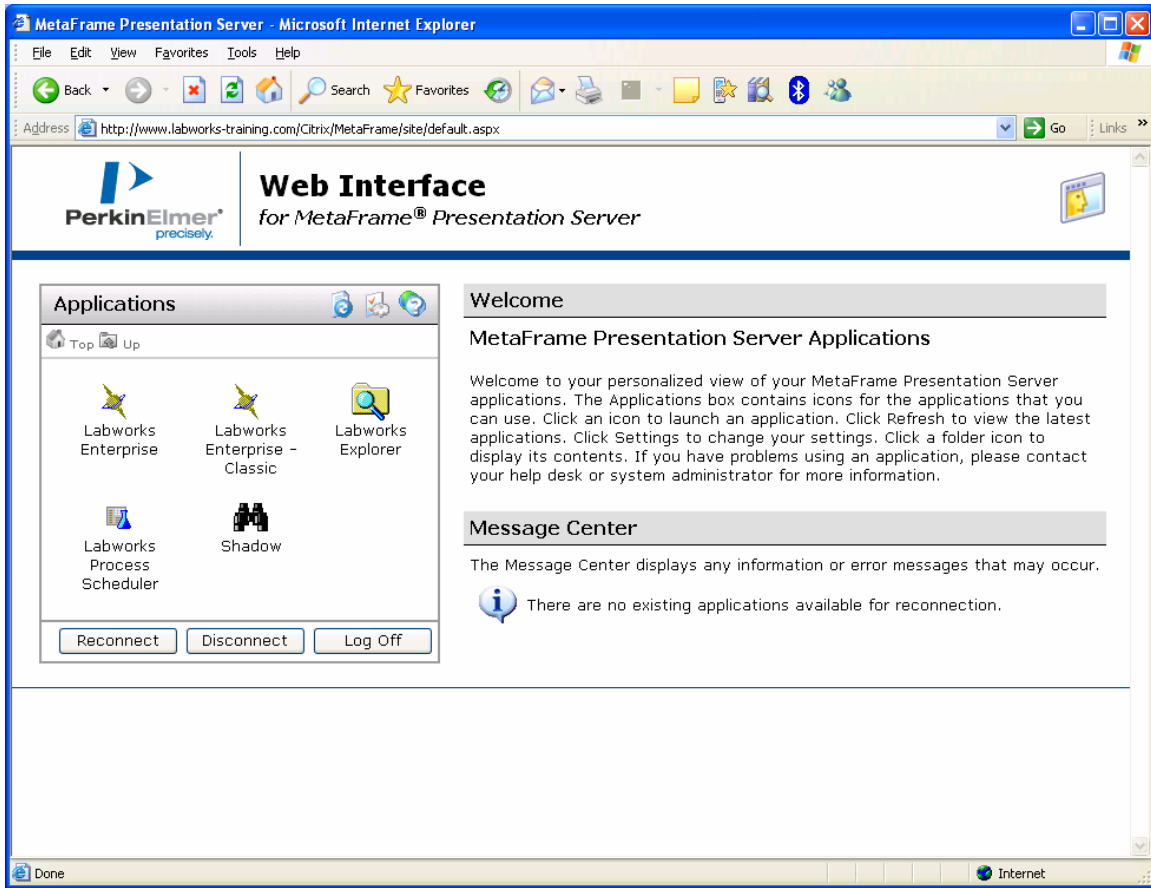
This document describes how to connect to the LABWORKS Citrix server. The LABWORKS Citrix server is used for implementation projects as well as demonstrations. It requires the installation of the “ICA Client” a component from Citrix, and possibly the configuration of your firewall.

1. Using your web browser connect to www.labworks-training.com



If this is the first time you are connecting you should get the information at the bottom about installing the MetaFrame Presentation Server Client. Click on the link to install the client. (Click run when prompted and install the client using default options)

2. Enter you user id/password for accessing the system. (This is not your labworks userid/password.) The userid you enter for accessing the system determines you capabilities within the system. (What programs and databases you have access to.)



With the client installed and user authenticated, you should now have a set of icons for the applications you have access to.

3. Click any LABWORKS Application to start LABWORKS. You should receive the LABWORKS logon screen.



Enter your LABWORKS User id and Password. (Default is userid: “USR”, and password: “1”)

At this point the select LABWORKS Application should start and LABWORKS should run as if it were installed on your computer.

